

# **Schaumburg High School**

## **Athletic Department**

### **Emergency Action Plan**

**2019-2020**

## Table of Contents

Sports Medicine Contacts	3
Introduction	4
Components of the Emergency Action Plan	4
Emergency Personnel	5
Role of first Responders	5
Activating EMS	6
Emergency Communication	6
Emergency Equipment	6
Emergency Transportation	7
Non-medical Emergencies	7
Venue Directions & Map	8
Conclusion	9
Venue Emergency Actions Plans:	
Athletic Training Room	10-11
Stadium	12-13
Red Field (north/south)	14-15
Gold Field (east west)	16-17
Baseball Fields	18-19
Softball Fields	20-21
Tennis Courts	22-23
Main Gym	24-25
Auxiliary Gym/Gymnastics	26-27
West Shelf	28-29
Wrestling Room	30-31
Pool	32-33
Campanelli Park (Off Campus)	34-35
Hoover Park (Off Campus)	36-37
Signatures of approval	38

## Schaumburg High School Sports Medicine Contacts

### Schaumburg High School

Main Office	(847)755-4600
Athletics Office	(847)755-4770
Athletic Training Room	(847)755-4790
Nurse's Office	(847)755- 4662

### Athletic Training Staff

Michael DeVries	(309)264-3892	<a href="mailto:mdevries@d211.org">mdevries@d211.org</a>
Stefanie Moranski	(815)575-3065	<a href="mailto:smoranski@d211.org">smoranski@d211.org</a>
Ashley Burrows	(847)757-5434	<a href="mailto:aburrows@d211.org">aburrows@d211.org</a>

### Team Physicians: Barrington Orthopedic Specialists

Appointments	(847)755-4200	<a href="http://www.barringtonortho.com">www.barringtonortho.com</a>
Immediate Care Clinic	929 West Higgins Rd. Schaumburg, IL 60195 (847)755-4250	Monday-Friday: 6pm-9pm Saturday: 1pm-4pm

### Local Hospital

AMITA St. Alexius Medical Center	1555 Barrington Road Hoffman Estates, IL 60169 (847)483-2000	<a href="http://www.amitahealth.org/our-locations/hospitals/amita-health-st-alexius-medical-center-hoffman-estates/">www.amitahealth.org/our-locations/hospitals/amita-health-st-alexius-medical-center-hoffman-estates/</a>
----------------------------------	---	--

### Emergency Services

Schaumburg Fire Station #51	950 W Schaumburg Road, Schaumburg, IL 60194	Emergency: 911
-----------------------------	--	----------------

## Introduction

Emergency situations may arise at any time during athletic events. Expedient action must be taken in order to provide the best possible care to the athletes in emergency and/or life threatening conditions. The development and implementation of an emergency plan will help ensure that the best care will be provided.

Athletic organizations have a duty to develop an emergency plan that may be implemented immediately when necessary and to provide appropriate standards of health care to all sports participants. As athletic injuries may occur at any time and during any activity, the sports medicine team must be prepared. This preparation involves the formulation of an emergency plan, proper coverage of events, maintenance of appropriate emergency equipment and supplies, utilization of appropriate emergency medical personnel, and continuing education in the area of emergency medicine. Hopefully, through careful pre-participation physical screenings, adequate medical coverage, safe practice and training techniques and other safety avenues, some potential emergencies may be averted. However, accidents and injuries are inherent with sports participation, and proper preparation on the part of the sports medicine team will enable each emergency situation to be managed properly.

## Components of the Emergency Action Plan

1. Emergency Personnel
2. Roles of the First Responder
3. Activating EMS
4. Emergency Communication
5. Emergency Equipment
6. Emergency Transportation
7. Non-Medical Emergencies
8. Venue Directions (with map)
9. Conclusion
10. Individual Venue Emergency Action Plans

<ol style="list-style-type: none"> <li>a. Athletic Training Room</li> <li>b. Stadium</li> <li>c. Red field (North/South)</li> <li>d. Baseball Fields</li> <li>e. Softball Fields</li> <li>f. Tennis Courts</li> <li>g. Main Gym</li> </ol>	<ol style="list-style-type: none"> <li>h. Auxiliary Gym/Gymnastics</li> <li>i. West/South Shelf</li> <li>j. Wrestling Room</li> <li>k. Pool</li> <li>l. Campanelli Park</li> <li>m. Hoover Park</li> </ol>
--	--

## Emergency Personnel

During typical athletic practice or competition, the first responder to an emergency is typically a member of the sports medicine staff, most commonly a Certified Athletic Trainer. A team physician may not always be present at every organized practice or competition. The type and degree of sports medicine coverage for an athletic event may vary widely based on such factors as the sport or activity, the setting, the type of training or competition. The first responder in some situations may be a coach or other school personnel.

## Role of First Responders

The development of an emergency action plan cannot be complete without the formation of an emergency team. The emergency team may consist of a number of healthcare providers including physicians, emergency medical technicians, certified athletic trainers, administrators on duty, coaches, managers, and possibly bystanders. Roles of these individuals within the emergency team may vary depending on various factors such as the number of members of the team, the athletic venue itself, or the preference of the athletic training staff. There are four basic roles within the emergency medical team.

1. The first and most important role is establishing safety of the scene and immediate care of the athlete. Acute care (immediate care) should be provided by the most qualified individual on the scene. Individuals with lower credentials should yield to those with more appropriate training.
2. EMS activation may be necessary in situations where emergency transportation is not already present at the sporting event. This should be done as soon as the situation is deemed an emergency or a life-threatening event. Time is the most critical factor under emergency conditions. Activating the EMS system may be done by anyone on the team. However, the person chosen for this duty should be someone who is calm under pressure and who communicates well over the telephone. This person should also be familiar with the location and address of the sporting event.
3. Equipment retrieval may be done by anyone on the emergency team who is familiar with the types and locations of the specific equipment needed.
4. Directing EMS to the scene is the fourth role. One member of the team should be responsible for meeting emergency medical personnel as they arrive at the site of the emergency. Depending on the ease of access, this person should have keys to any locked gates or doors that may slow the arrival of the medical personnel. An administrator on duty, manager, or coach may be appropriate for this role.

## Activating EMS

Making the Call:

9-1-1

Providing the Following Information:

- Name, address, telephone number of caller
- Nature of emergency, whether medical or non-medical
- Number of athletes injured
- Condition of athlete (breathing, not breathing, pulse, no pulse, bleeding, conscious, unconscious)
- First aid treatment initiated by ATC/coach (blood control, rescue breathing, CPR)
- Specific directions as needed to location of injured athlete (see individual venue EAP)
- Other information as requested by dispatcher

## Emergency Communication

Communication is essential during an emergency response situation. Athletic trainers and emergency medical personnel must work together to provide the best emergency response possible. Communication prior to the event is a good way to establish boundaries and to build rapport between both groups of professionals. If emergency medical transportation is not available on site during a particular sporting event, then direct communication with the emergency medical system at the time of the injury or illness is necessary.

Access to a working telephone or other telecommunication device, whether fixed or mobile, should be assured. The communications system should be checked prior to each practice or competition to ensure proper working order. A back-up communication plan should be in effect should there be failure of the primary communication system. A cellular phone is preferred if available. At any athletic venue, whether home or away, it is important to know the location of a functioning telephone. Pre-arranged access to the phone should be established if not easily accessible.

## Emergency Equipment

All necessary emergency equipment should be at the site and quickly accessible. Personnel should be familiar with the function and operation of each type of emergency equipment. Equipment should be in good operating condition, and personnel must be trained in advance to use it properly. All equipment will be checked on an annual basis, or as deemed necessary by the sports medicine staff. Emergency equipment available should be appropriate for the level of training for the emergency medical providers.

It is important to know the proper way to care for and store the equipment as well.

Equipment should be stored in a clean and environmentally controlled area. It should be readily available when emergency situations arise.

## Emergency Transportation

Emphasis is placed on having an ambulance on site at high risk sporting events. EMS response time is additionally factored in when determining on site ambulance coverage. The athletic department coordinates on site ambulances for competition in football. Ambulances may be coordinated on site for other special events/sports such as for conference tournaments and postseason events that are hosted. Consideration is given to the capabilities of transportation service available (i.e. basic life support and advanced life support) and the equipment and level of trained personnel on board the ambulance. In the event that an ambulance is on site, there should be a designated location with rapid access to the site and a cleared route for entering/exiting the venue.

In the medical emergency evaluation, the primary survey assists the emergency care provider in identifying emergencies requiring critical intervention and in determining transport decisions. In an emergency situation, the athlete should be transported by ambulance, where the necessary staff and equipment is available to deliver appropriate medical care. Emergency care providers should refrain from transporting unstable athletes in inappropriate vehicles. Care must be taken to ensure that the activity areas are supervised should the emergency care provider leave the site in transporting the athlete. Any emergency situations where there is impairment in level of consciousness (LOC), airway, breathing, or circulation (ABC) or there is neurovascular compromise should be considered a “load and go” situation and emphasis placed on rapid evaluation, treatment and transportation.

## Non-Medical Emergencies

For the non-medical emergencies (fire, bomb threats, violent or criminal behavior, etc.) refer to the school emergency closing information page and follow instructions.

- <https://adc.d211.org/Page/4735>
- District 211 Announcement Hotline
  - o (847)755-6635

## Venue Directions (with map)

For Schaumburg High School athletic facilities, the following directions can be used when activating EMS.

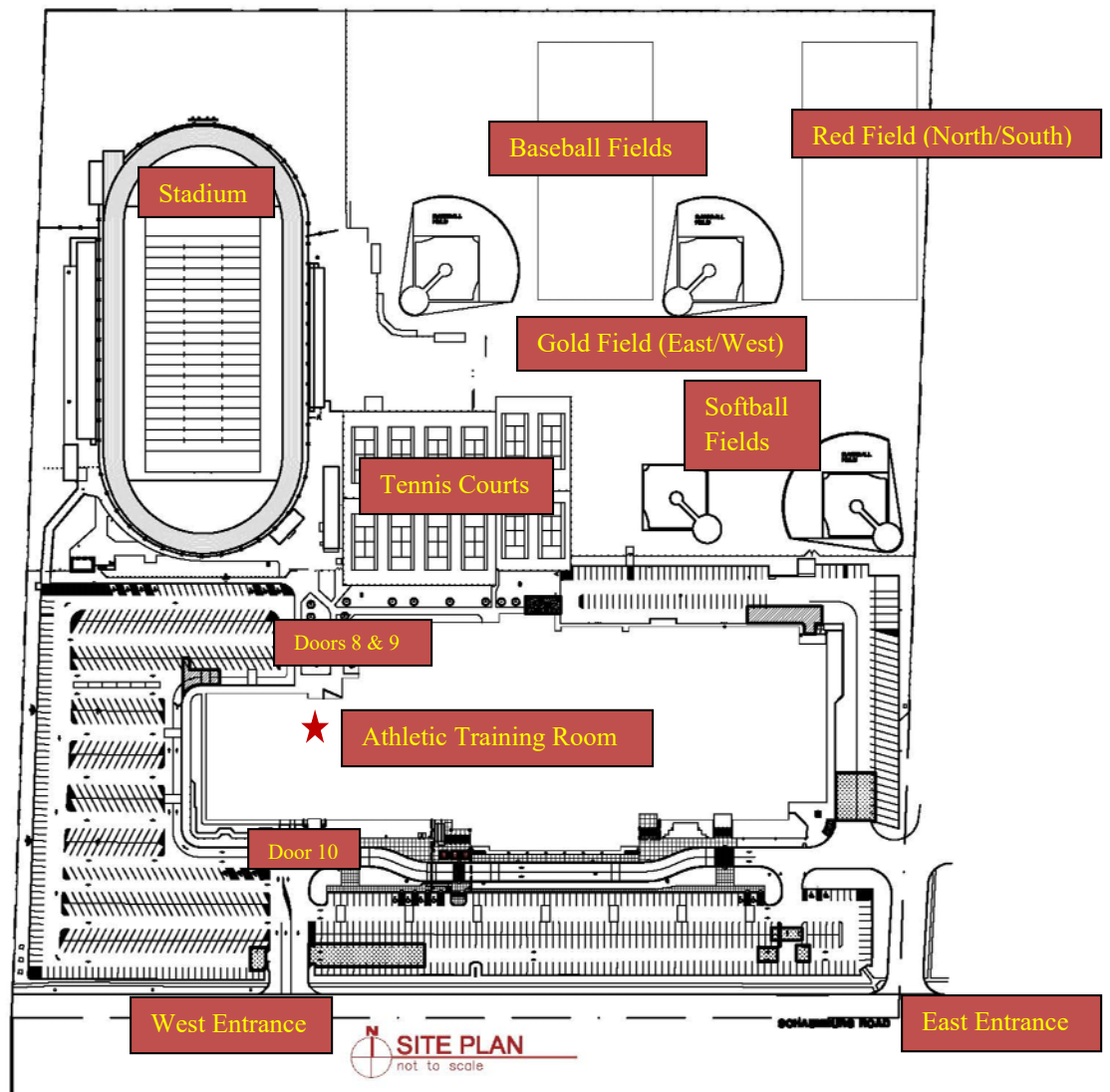
From East:

- Head west on Schaumburg Road
- School entrance is located just west of Salem Drive on the north side of Schaumburg Road
- Depending on venue enter through east or west entrance (see venue EAP)

From West:

- Head east on Schaumburg Road
- School entrance is located just east of Braintree Drive on the north side of Schaumburg Road
- Depending on venue enter through east or west entrance (see venue EAP)

### Schaumburg High School





## Conclusion

The importance of being properly prepared when athletic emergencies arise cannot be stressed enough. An athlete's survival may hinge on how well trained and prepared athletic healthcare providers are. It is prudent to invest athletic department "ownership" in the emergency plan by involving the athletic administration and sport coaches as well as sports medicine personnel. The Emergency plan should be reviewed at least once a year with all athletic personnel. Through development and implementation of the emergency plan, Schaumburg High School helps ensure that the athlete will have the best care provided when an emergency situation does arise.

## Emergency Action Plan Athletic Training Room (ATR)

### Emergency Personnel

A certified athletic trainer is on-site for all athletic events and scheduled practices.

### Emergency Communication

Hand held radios will be used to communicate between all venues, administration on site, and the athletic training room during events. Below are contacts for phone use during practices.

Athletic Training Room	(847)755-4790
------------------------	---------------

### Emergency Equipment

A First Aid kit and supplies can be found with each athletic trainer on site. Additional emergency equipment can be found in the ATR.

### AED Location

An AED is located in the hallway east of the ATR on the north wall.



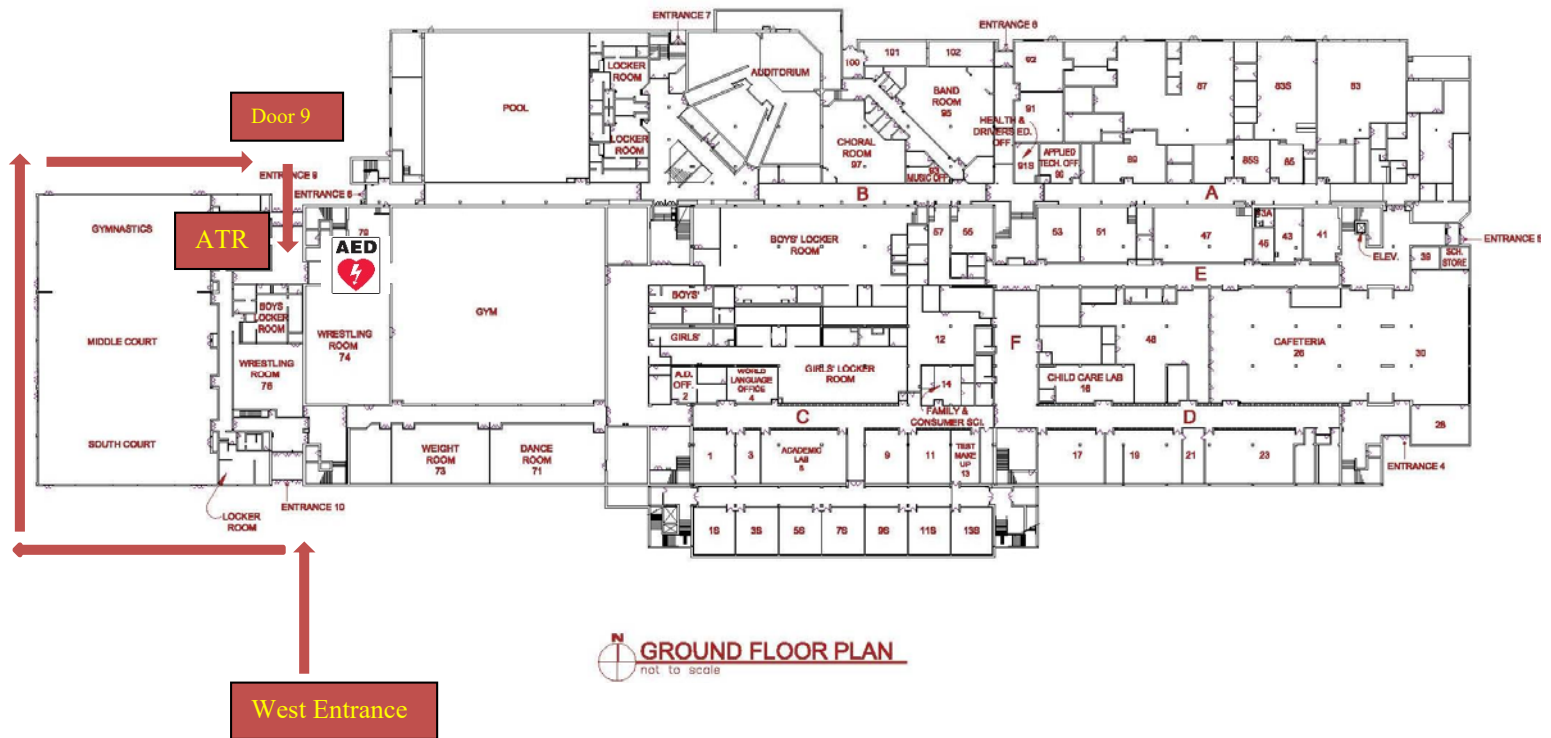
### Roles of the First Responder

1. Immediate care of injured or ill student-athlete.
2. Activation of emergency medical services (EMS)
  - Call 9-1-1
3. Emergency equipment retrieval

4. Direct EMS to scene
  - a. Open appropriate doors/gates
  - b. Designate individual to “flag down” EMS and direct to scene
  - c. Scene control: Limit scene to first aid providers and move bystanders away from area

Map

Schaumburg High School



Safety Locations

In the event of severe weather (lightning/thunderstorms/tornado) athletes will be moved into the nearest locker room. In the event of a fire or bomb threat, the athletes will evacuate the building and move to the athletics parking lot on the southwest side of campus. Coaches will be responsible for ensuring that all players are accounted for. In the event of a lock down, athletes will report to their locker rooms until the all clear signal has been given.

## Emergency Action Plan Stadium

### Emergency Personnel

A certified athletic trainer is on-site for all athletic events and scheduled practices.

### Emergency Communication

Hand held radios will be used to communicate between the stadium, administration on site, and the athletic training room during events. Below are contacts for phone use during practices.

Athletic Training Room	(847)755-4790
------------------------	---------------

### Emergency Equipment

A First Aid kit and supplies can be found with each athletic trainer on site. Additional emergency equipment can be found on the sideline during events or in the athletic training room.

### AED Locations

AEDs are located on the concession stand next to the west stands and also on the concession next to the east stands.

East Stands



West Stands

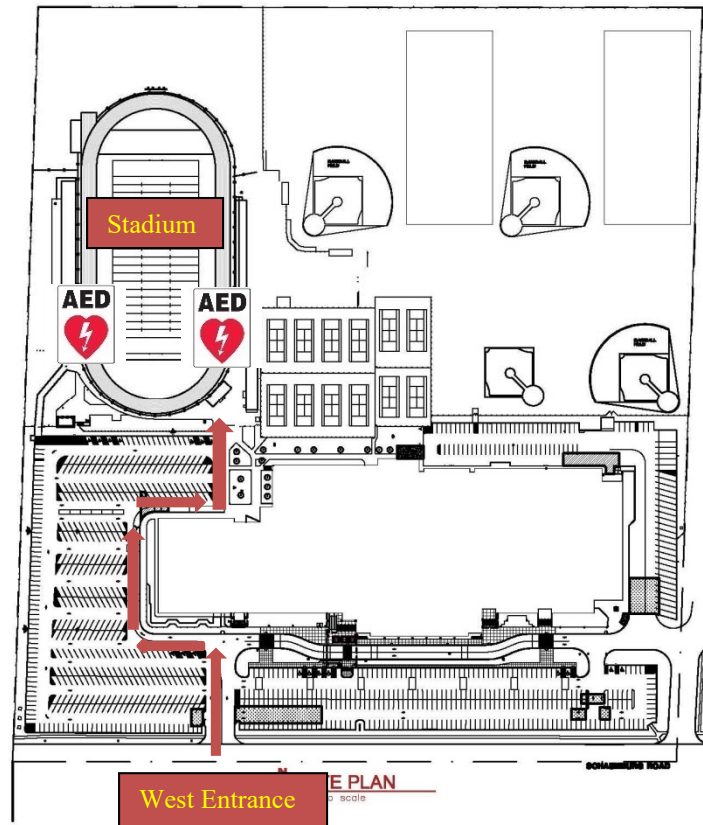


### Roles of the First Responder

5. Immediate care of injured or ill student-athlete.
6. Activation of emergency medical services (EMS)
  - Call 9-1-1
7. Emergency equipment retrieval
8. Direct EMS to scene
  - a. Open appropriate doors/gates
  - b. Designate individual to “flag down” EMS and direct to scene
  - c. Scene control: Limit scene to first aid providers and move bystanders away from area

## Map

## Schaumburg High School



## Safety Locations

In the event of severe weather (lightning/thunderstorms/tornado) athletes will be moved into the school building and designated to an area within the building by the administrator on site. In the event of a fire or bomb threat, the athletes will evacuate the field and move to the athletics parking lot on the west side of campus. Coaches will be responsible for ensuring that all players are accounted for. In the event of a lock down, athletes will report to their locker rooms, or exit campus as deemed appropriate by the administrator on site until the all clear signal has been given.

## Emergency Action Plan Red Field (North/South)

### Emergency Personnel

A certified athletic trainer is on-site for all athletic events and scheduled practices.

### Emergency Communication

Hand held radios will be used to communicate between the field, administration on site, and the athletic training room during events. Below are contacts for phone use during practices.

Athletic Training Room	(847)755-4790
------------------------	---------------

### Emergency Equipment

A First Aid kit and supplies can be found with each athletic trainer on site. Additional emergency equipment can be found on the sideline during events or in the athletic training room.

### AED Location

An AED is located on the south softball dugout wall.

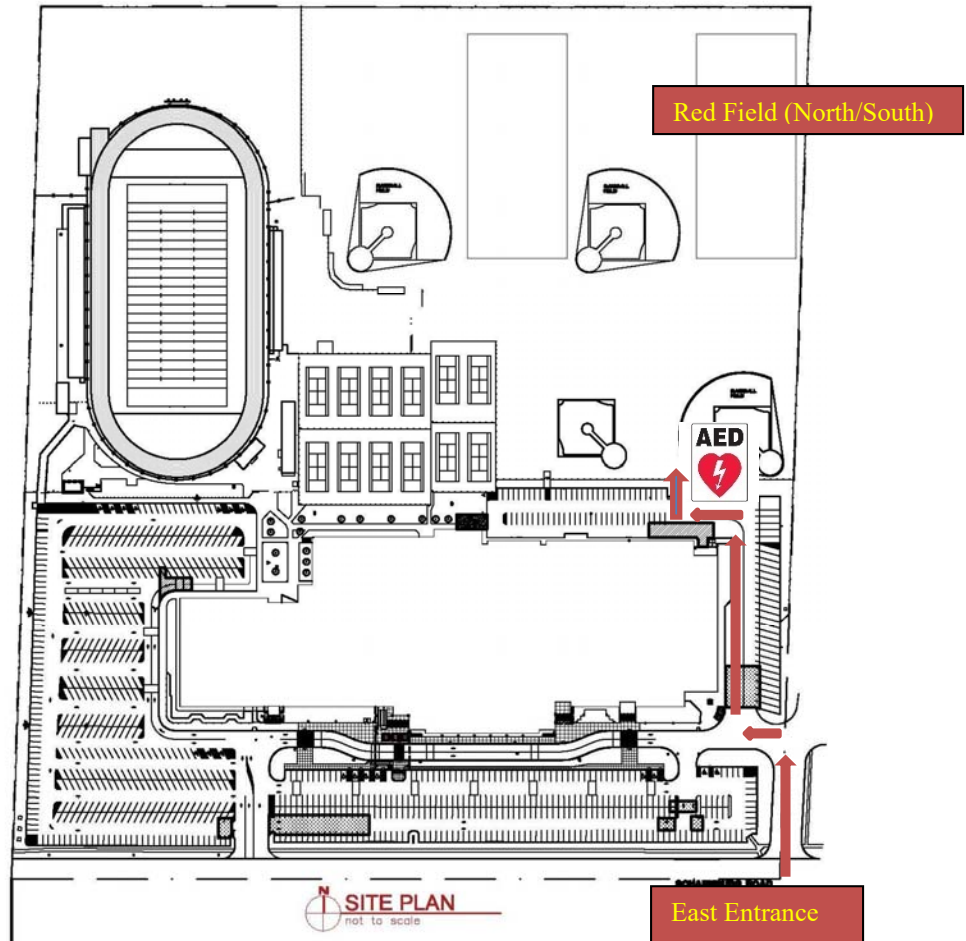


### Roles of the First Responder

9. Immediate care of injured or ill student-athlete.
10. Activation of emergency medical services (EMS)
  - Call 9-1-1
11. Emergency equipment retrieval
12. Direct EMS to scene
  - a. Open appropriate doors/gates
  - b. Designate individual to “flag down” EMS and direct to scene
  - c. Scene control: Limit scene to first aid providers and move bystanders away from area

Map

Schaumburg High School



Safety Locations

In the event of severe weather (lightning/thunderstorms/tornado) athletes will be moved into the school building and designated to an area within the building by the administrator on site. In the event of a fire or bomb threat, the athletes will evacuate the field and move to the athletics parking lot on the west side of campus. Coaches will be responsible for ensuring that all players are accounted for. In the event of a lock down, athletes will report to their locker rooms, or exit campus as deemed appropriate by the administrator on site until the all clear signal has been given.

## Emergency Action Plan Gold Field (East/West)

### Emergency Personnel

A certified athletic trainer is on-site for all athletic events and can be reached in the athletic training room during practices.

### Emergency Communication

Hand held radios will be used to communicate between the field, administration on site, and the athletic training room during events. Below are contacts for phone use during practices.

Athletic Training Room	(847)755-4790
------------------------	---------------

### Emergency Equipment

A First Aid kit and supplies can be found with each athletic trainer on site. Additional emergency equipment can be found on the sideline during events or in the athletic training room.

### AED Location

An AED is located on the south softball dugout wall.



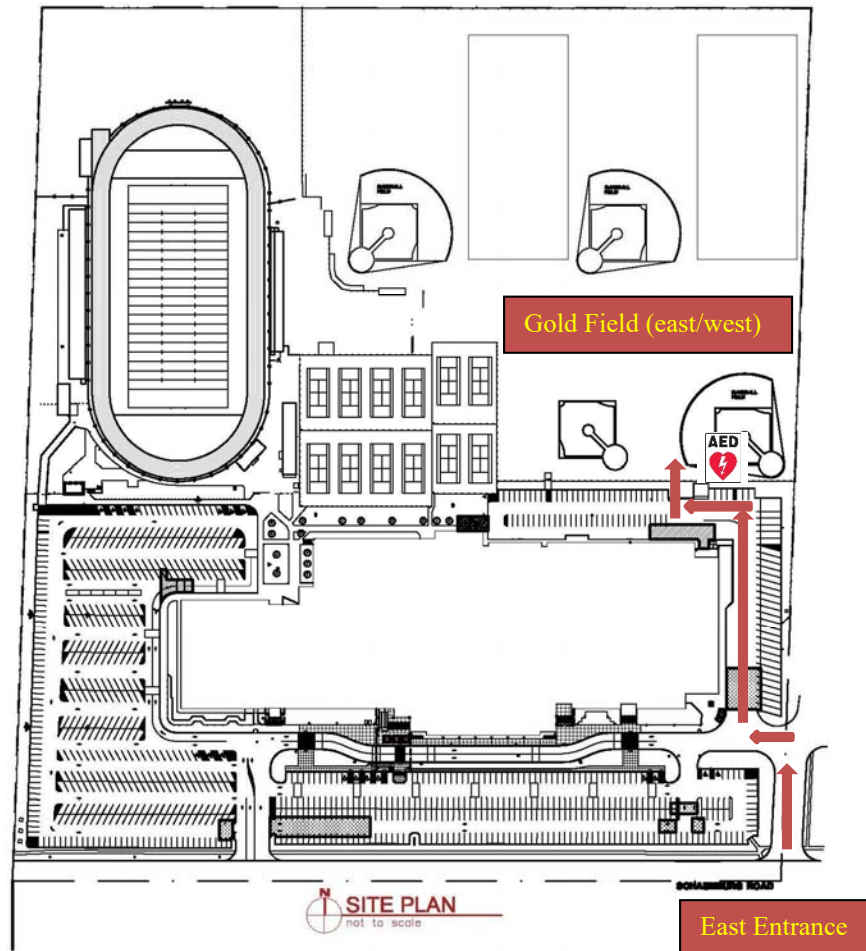
### Roles of the First Responder

13. Immediate care of injured or ill student-athlete.
14. Activation of emergency medical services (EMS)
  - Call 9-1-1
15. Emergency equipment retrieval
16. Direct EMS to scene
  - a. Open appropriate doors/gates
  - b. Designate individual to “flag down” EMS and direct to scene
  - c. Scene control: Limit scene to first aid providers and move bystanders away from area



## Map

## Schaumburg High School



## Safety Locations

In the event of severe weather (lightning/thunderstorms/tornado) athletes will be moved into the school building and designated to an area within the building by the administrator on site. In the event of a fire or bomb threat, the athletes will evacuate the field and move to the athletics parking lot on the west side of campus. Coaches will be responsible for ensuring that all players are accounted for. In the event of a lock down, athletes will report to their locker rooms, or exit campus as deemed appropriate by the administrator on site until the all clear signal has been given.

## Emergency Action Plan Baseball Fields

### Emergency Personnel

A certified athletic trainer is on-site for all athletic events and can be reached in the athletic training room during practices.

### Emergency Communication

Hand held radios will be used to communicate between the field, administration on site, and the athletic training room during events. Below are contacts for phone use during practices.

Athletic Training Room	(847)755-4790
------------------------	---------------

### Emergency Equipment

A First Aid kit and supplies can be found with each athletic trainer on site. Additional emergency equipment can be found in the athletic training room.

### AED Location

An AED is located on the west baseball dugout wall.

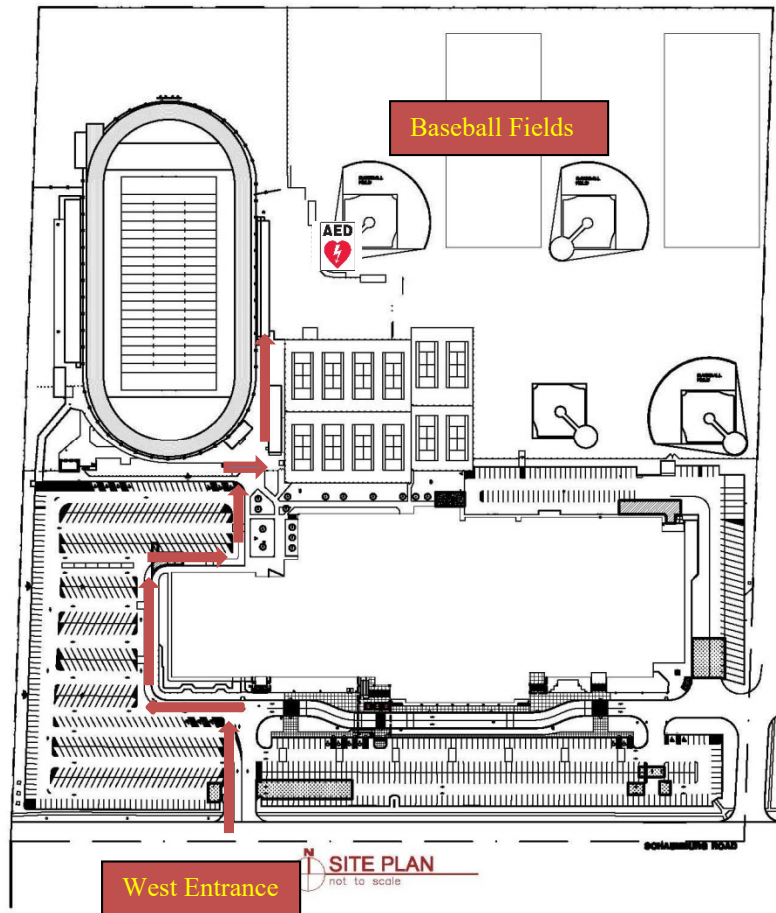


### Roles of the First Responder

17. Immediate care of injured or ill student-athlete.
18. Activation of emergency medical services (EMS)
  - Call 9-1-1
19. Emergency equipment retrieval
20. Direct EMS to scene
  - a. Open appropriate doors/gates
  - b. Designate individual to “flag down” EMS and direct to scene
  - c. Scene control: Limit scene to first aid providers and move bystanders away from area

## Map

## Schaumburg High School



## Safety Locations

In the event of severe weather (lightning/thunderstorms/tornado) athletes will be moved into the school building and designated to an area within the building by the administrator on site. In the event of a fire or bomb threat, the athletes will evacuate the field and move to the athletics parking lot on the west side of campus. Coaches will be responsible for ensuring that all players are accounted for. In the event of a lock down, athletes will report to their locker rooms, or exit campus as deemed appropriate by the administrator on site until the all clear signal has been given.

## Emergency Action Plan Softball Fields

### Emergency Personnel

A certified athletic trainer is on-site for all athletic events and can be reached in the athletic training room during practices.

### Emergency Communication

Hand held radios will be used to communicate between the field, administration on site, and the athletic training room during events. Below are contacts for phone use during practices.

Athletic Training Room	(847)755-4790
------------------------	---------------

### Emergency Equipment

A First Aid kit and supplies can be found with each athletic trainer on site. Additional emergency equipment can be found in the athletic training room.

### AED Location

An AED is located on the south softball dugout wall.

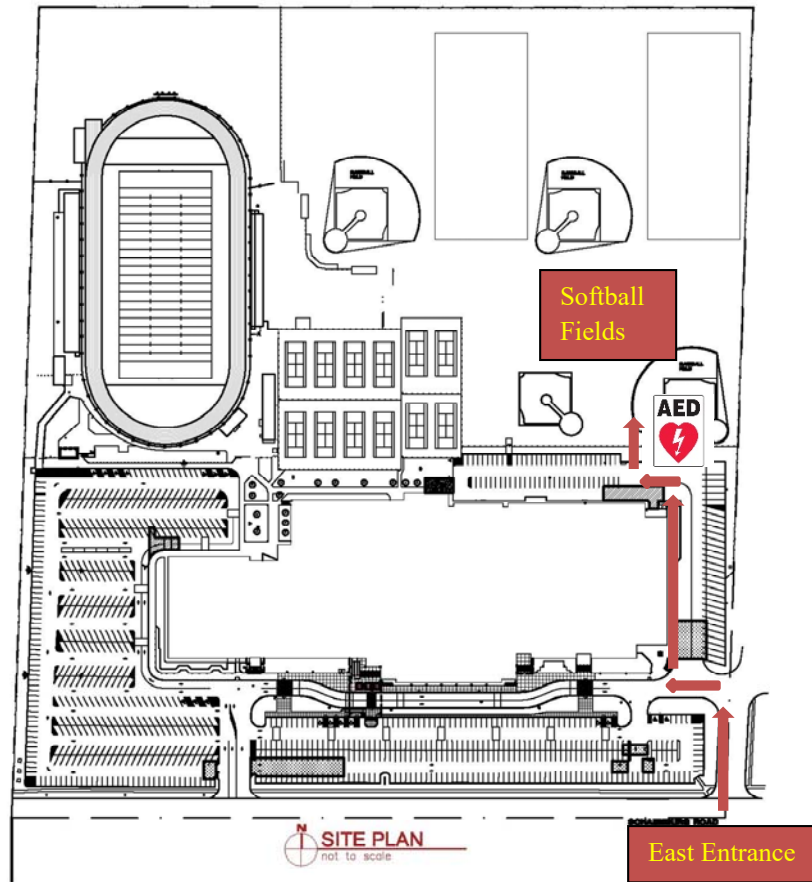


### Roles of the First Responder

21. Immediate care of injured or ill student-athlete.
22. Activation of emergency medical services (EMS)
  - Call 9-1-1
23. Emergency equipment retrieval
24. Direct EMS to scene
  - a. Open appropriate doors/gates
  - b. Designate individual to “flag down” EMS and direct to scene
  - c. Scene control: Limit scene to first aid providers and move bystanders away from area

## Map

## Schaumburg High School



## Safety Locations

In the event of severe weather (lightning/thunderstorms/tornado) athletes will be moved into the school building and designated to an area within the building by the administrator on site. In the event of a fire or bomb threat, the athletes will evacuate the field and move to the athletics parking lot on the west side of campus. Coaches will be responsible for ensuring that all players are accounted for. In the event of a lock down, athletes will report to their locker rooms, or exit campus as deemed appropriate by the administrator on site until the all clear signal has been given.

## Emergency Action Plan Tennis Courts

### Emergency Personnel

A certified athletic trainer is on-site for all athletic events and can be reached in the athletic training room during practices.

### Emergency Communication

Hand held radios will be used to communicate between the courts, administration on site, and the athletic training room during events. Below are contacts for phone use during practices.

Athletic Training Room	(847)755-4790
------------------------	---------------

### Emergency Equipment

A First Aid kit and supplies can be found with each athletic trainer on site. Additional emergency equipment can be found in the athletic training room.

### AED Location

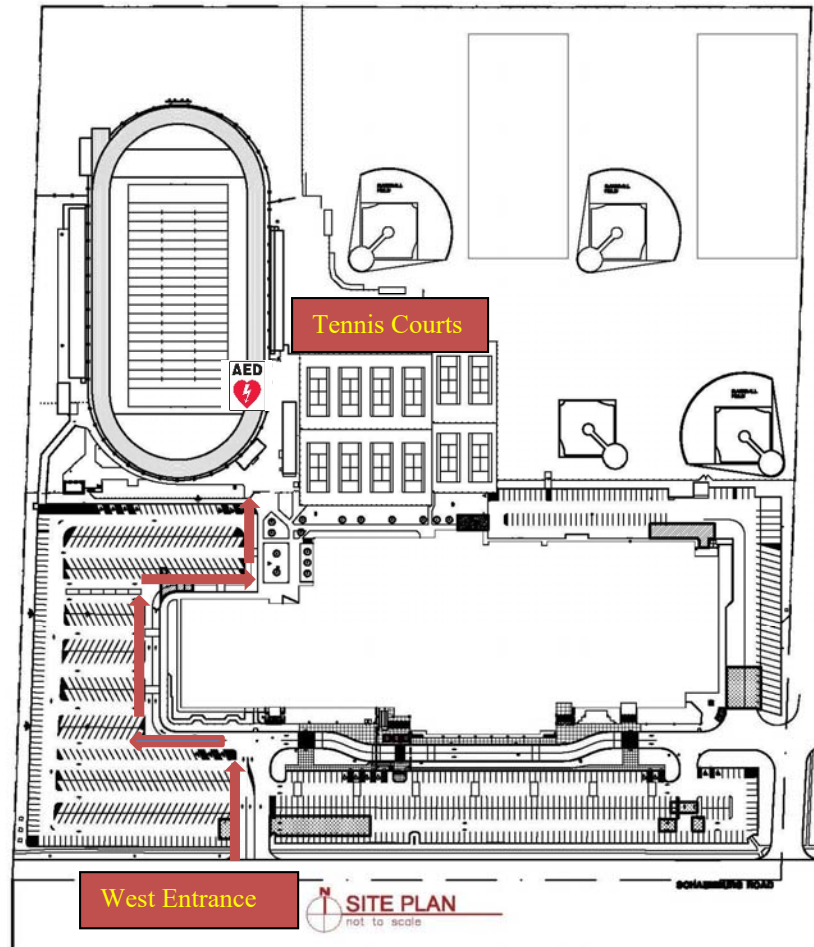
An AED is located on the concessions stand next to the east stadium stands.



### Roles of the First Responder

25. Immediate care of injured or ill student-athlete.
26. Activation of emergency medical services (EMS)
  - Call 9-1-1
27. Emergency equipment retrieval
28. Direct EMS to scene
  - a. Open appropriate doors/gates
  - b. Designate individual to “flag down” EMS and direct to scene
  - c. Scene control: Limit scene to first aid providers and move bystanders away from area

Map  
Schaumburg High School



### Safety Locations

In the event of severe weather (lightning/thunderstorms/tornado) athletes will be moved into the school building and designated to an area within the building by the administrator on site. In the event of a fire or bomb threat, the athletes will evacuate the field and move to the athletics parking lot on the west side of campus. Coaches will be responsible for ensuring that all players are accounted for. In the event of a lock down, athletes will report to their locker rooms, or exit campus as deemed appropriate by the administrator on site until the all clear signal has been given.

## Emergency Action Plan Main Gym

### Emergency Personnel

A certified athletic trainer is on-site for all athletic events and can be reached in the athletic training room during practices.

### Emergency Communication

Hand held radios will be used to communicate between the gym, administration on site, and the athletic training room during events. Below are contacts for phone use during practices.

Athletic Training Room	(847)755-4790
------------------------	---------------

### Emergency Equipment

A First Aid kit and supplies can be found with each athletic trainer on site. Additional emergency equipment can be found in the athletic training room.

### AED Location

An AED is located in the hallway west of the gym on the north wall.



### Roles of the First Responder

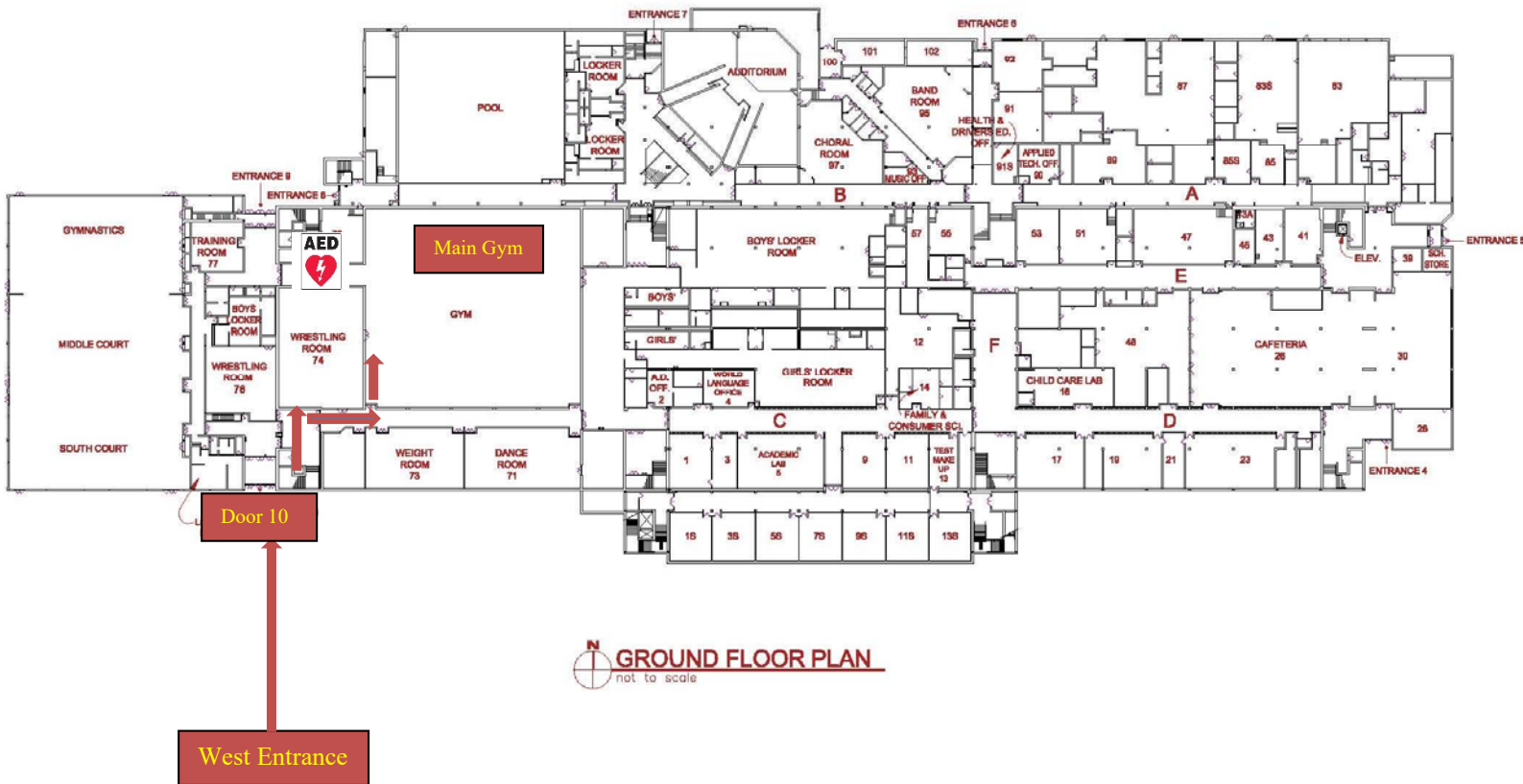
29. Immediate care of injured or ill student-athlete.
30. Activation of emergency medical services (EMS)
  - Call 9-1-1
31. Emergency equipment retrieval
32. Direct EMS to scene
  - a. Open appropriate doors/gates
  - b. Designate individual to “flag down” EMS and direct to scene



- c. Scene control: Limit scene to first aid providers and move bystanders away from area

Map

Schaumburg High School



Safety Locations

In the event of severe weather (lightning/thunderstorms/tornado) athletes will be moved into the nearest locker rooms. In the event of a fire or bomb threat, the athletes will evacuate the building and move to the athletics parking lot on the southwest side of campus. Coaches will be responsible for ensuring that all players are accounted for. In the event of a lock down, athletes will report to their locker rooms until the all clear signal has been given.

## Emergency Action Plan Auxiliary Gym/Gymnastics

### Emergency Personnel

A certified athletic trainer is on-site for all athletic events and can be reached in the athletic training room during practices.

### Emergency Communication

Hand held radios will be used to communicate between the gym, administration on site, and the athletic training room during events. Below are contacts for phone use during practices.

Athletic Training Room	(847)755-4790
------------------------	---------------

### Emergency Equipment

A First Aid kit and supplies can be found with each athletic trainer on site. Additional emergency equipment can be found in the athletic training room.

### AED Location

An AED is located in the hallway east of the gymnastics room on the north wall.



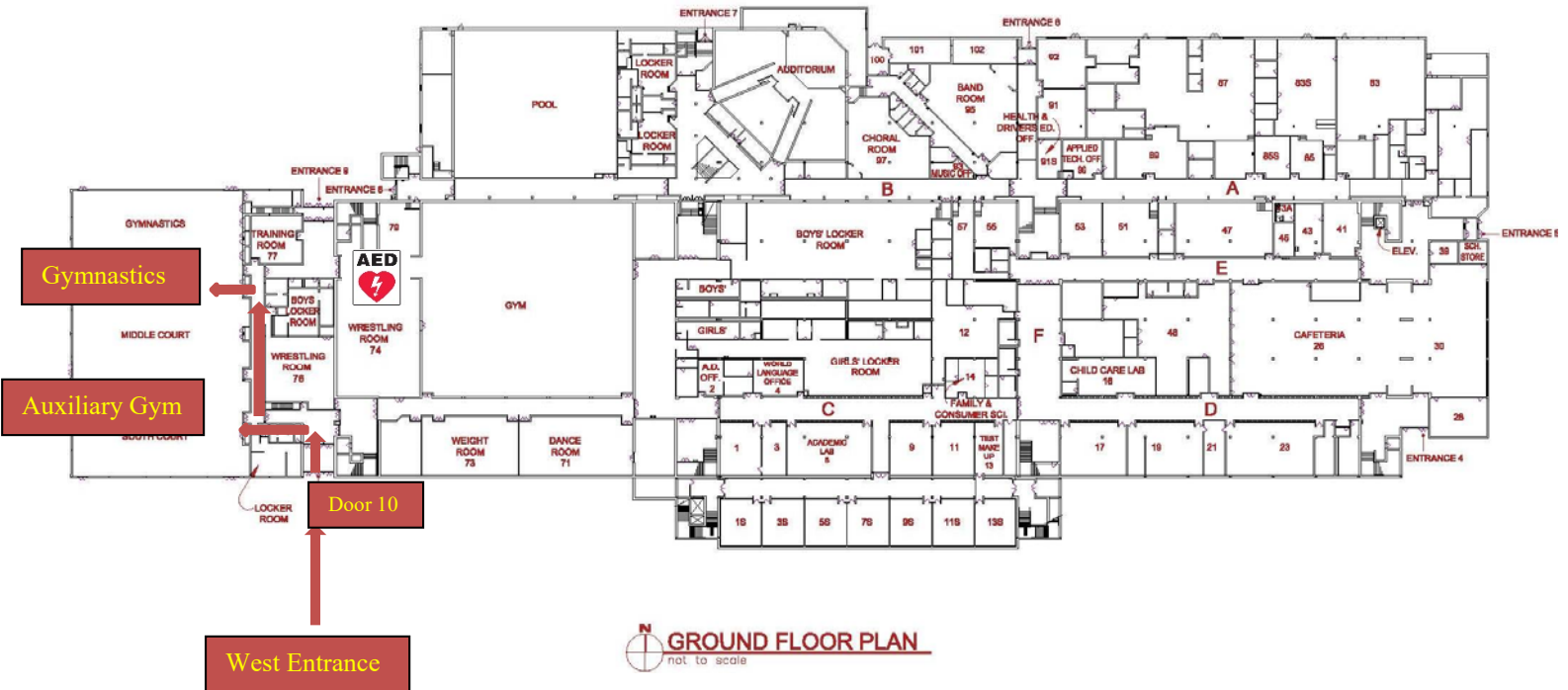
### Roles of the First Responder

33. Immediate care of injured or ill student-athlete.
34. Activation of emergency medical services (EMS)
  - Call 9-1-1
35. Emergency equipment retrieval
36. Direct EMS to scene
  - a. Open appropriate doors/gates
  - b. Designate individual to “flag down” EMS and direct to scene

- c. Scene control: Limit scene to first aid providers and move bystanders away from area

Map

Schaumburg High School



Safety Locations

In the event of severe weather (lightning/thunderstorms/tornado) athletes will be moved into the nearest locker rooms located in the same hallway. In the event of a fire or bomb threat, the athletes will evacuate the building and move to the athletics parking lot on the southwest side of campus. Coaches will be responsible for ensuring that all players are accounted for. In the event of a lock down, athletes will report to their locker rooms until the all clear signal has been given.

## Emergency Action Plan West/South Shelf

### Emergency Personnel

A certified athletic trainer is on-site for all athletic events and can be reached in the athletic training room during practices.

### Emergency Communication

Hand held radios will be used to communicate between the gym, administration on site, and the athletic training room during events. Below are contacts for phone use during practices.

Athletic Training Room	(847)755-4790
------------------------	---------------

### Emergency Equipment

A First Aid kit and supplies can be found with each athletic trainer on site. Additional emergency equipment can be found in the athletic training room.

### AED Location

An AED is located in the hallway east of the west shelf entrance on the south wall.



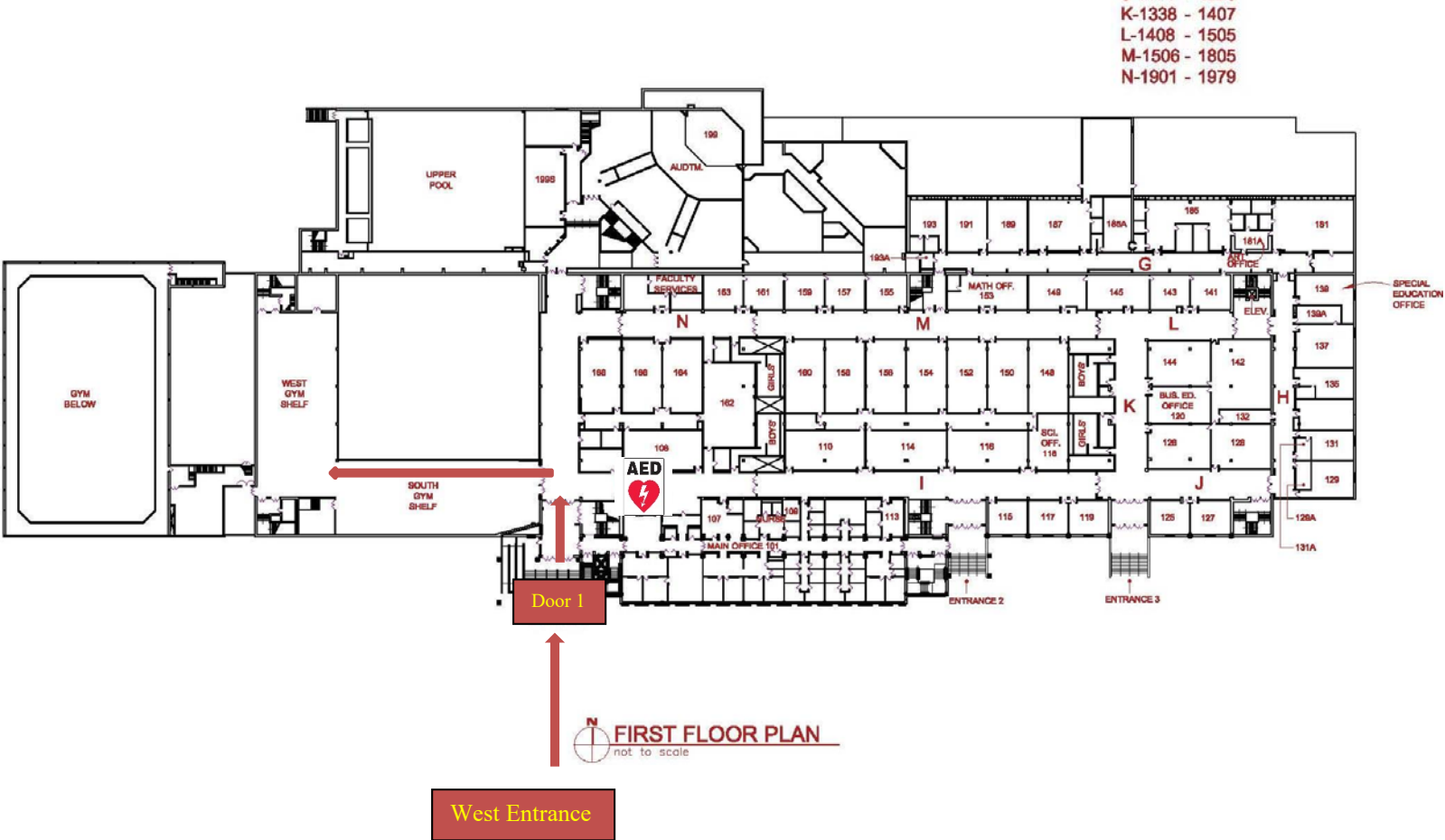
### Roles of the First Responder

37. Immediate care of injured or ill student-athlete.
38. Activation of emergency medical services (EMS)
  - Call 9-1-1
39. Emergency equipment retrieval
40. Direct EMS to scene
  - a. Open appropriate doors/gates
  - b. Designate individual to “flag down” EMS and direct to scene
  - c. Scene control: Limit scene to first aid providers and move bystanders away from area

Map

Schaumburg High School

K-1338 - 1407  
L-1408 - 1505  
M-1506 - 1805  
N-1901 - 1979



Safety Locations

In the event of severe weather (lightning/thunderstorms/tornado) athletes will be moved into the nearest locker rooms located on the ground floor. In the event of a fire or bomb threat, the athletes will evacuate the building and move to the main parking lot on the south side of campus. Coaches will be responsible for ensuring that all players are accounted for. In the event of a lock down, athletes will report to their locker rooms until the all clear signal has been given.

## Emergency Action Plan Wrestling Room

### Emergency Personnel

A certified athletic trainer is on-site for all athletic events and can be reached in the athletic training room during practices.

### Emergency Communication

Hand held radios will be used to communicate between the wrestling room, administration on site, and the athletic training room. Below are contacts for phone use.

Athletic Training Room	(847)755-4790
------------------------	---------------

### Emergency Equipment

A First Aid kit and supplies can be found with each athletic trainer on site. Additional emergency equipment can be found in the athletic training room.

### AED Location

An AED is located in the hallway north of the wrestling room on the north wall.

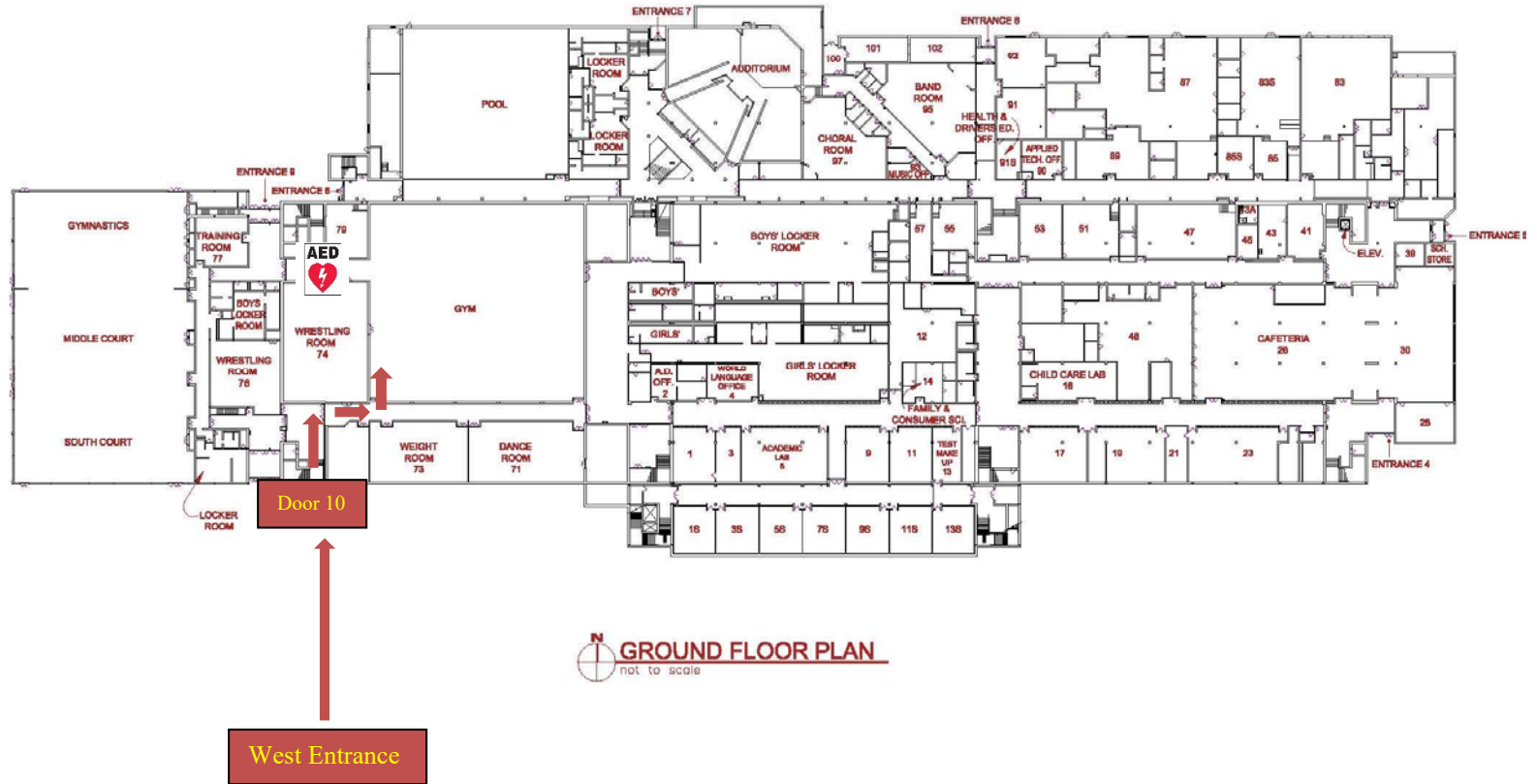


### Roles of the First Responder

41. Immediate care of injured or ill student-athlete.
42. Activation of emergency medical services (EMS)
  - Call 9-1-1
43. Emergency equipment retrieval
44. Direct EMS to scene
  - a. Open appropriate doors/gates
  - b. Designate individual to “flag down” EMS and direct to scene
  - c. Scene control: Limit scene to first aid providers and move bystanders away from area

Map

Schaumburg High School



Safety Locations

In the event of severe weather (lightning/thunderstorms/tornado) athletes will be moved into the nearest locker rooms located west of the wrestling room. In the event of a fire or bomb threat, the athletes will evacuate the building and move to the athletics parking lot on the southwest side of campus. Coaches will be responsible for ensuring that all players are accounted for. In the event of a lock down, athletes will report to their locker rooms until the all clear signal has been give

## Emergency Action Plan Pool

### Emergency Personnel

A certified athletic trainer is on-site for all athletic events and can be reached in the athletic training room during practices.

### Emergency Communication

Hand held radios will be used to communicate between the pool, administration on site, and the athletic training room during events. Below are contacts for phone use during practices.

Athletic Training Room	(847)755-4790
------------------------	---------------

### Emergency Equipment

A First Aid kit and supplies can be found with each athletic trainer on site. Additional emergency equipment can be found in the athletic training room.

### AED Location

An AED is located on the east wall in the pool.



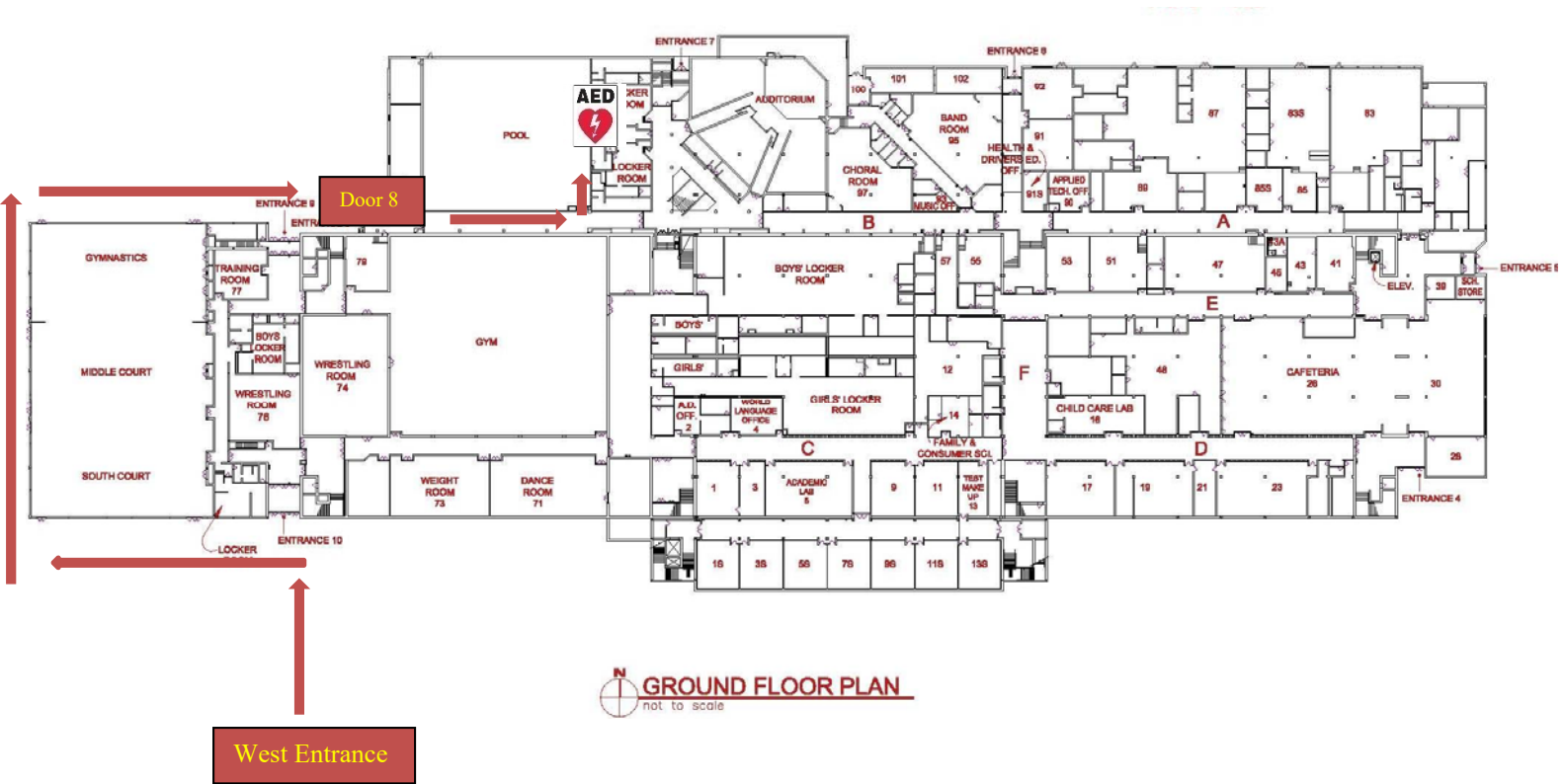
### Roles of the First Responder

45. Immediate care of injured or ill student-athlete.
46. Activation of emergency medical services (EMS)
  - Call 9-1-1
47. Emergency equipment retrieval
48. Direct EMS to scene
  - a. Open appropriate doors/gates
  - b. Designate individual to “flag down” EMS and direct to scene
  - c. Scene control: Limit scene to first aid providers and move bystanders away from area



Map

Schaumburg High School



Safety Locations

In the event of severe weather (lightning/thunderstorms/tornado) athletes will be moved into the pool locker rooms located on the east side of the pool. In the event of a fire or bomb threat, the athletes will evacuate the building and move to the athletics parking lot on the southwest side of campus. Coaches will be responsible for ensuring that all players are accounted for. In the event of a lock down, athletes will report to their locker rooms until the all clear signal has been given.

## Emergency Action Plan Campanelli Park

### Emergency Personnel

A coach will be the only emergency personnel when practices take place off-site. All coaches are required to be CPR/AED certified.

### Emergency Communication

Cell phone use should be used when practices are taking place off-site. Below are contact numbers for the SHS Athletic Training Staff.

Athletic Training Room	(847)755-4790
------------------------	---------------

### Emergency Equipment

A First Aid kit and supplies are available and can be brought by a coach or team manager.

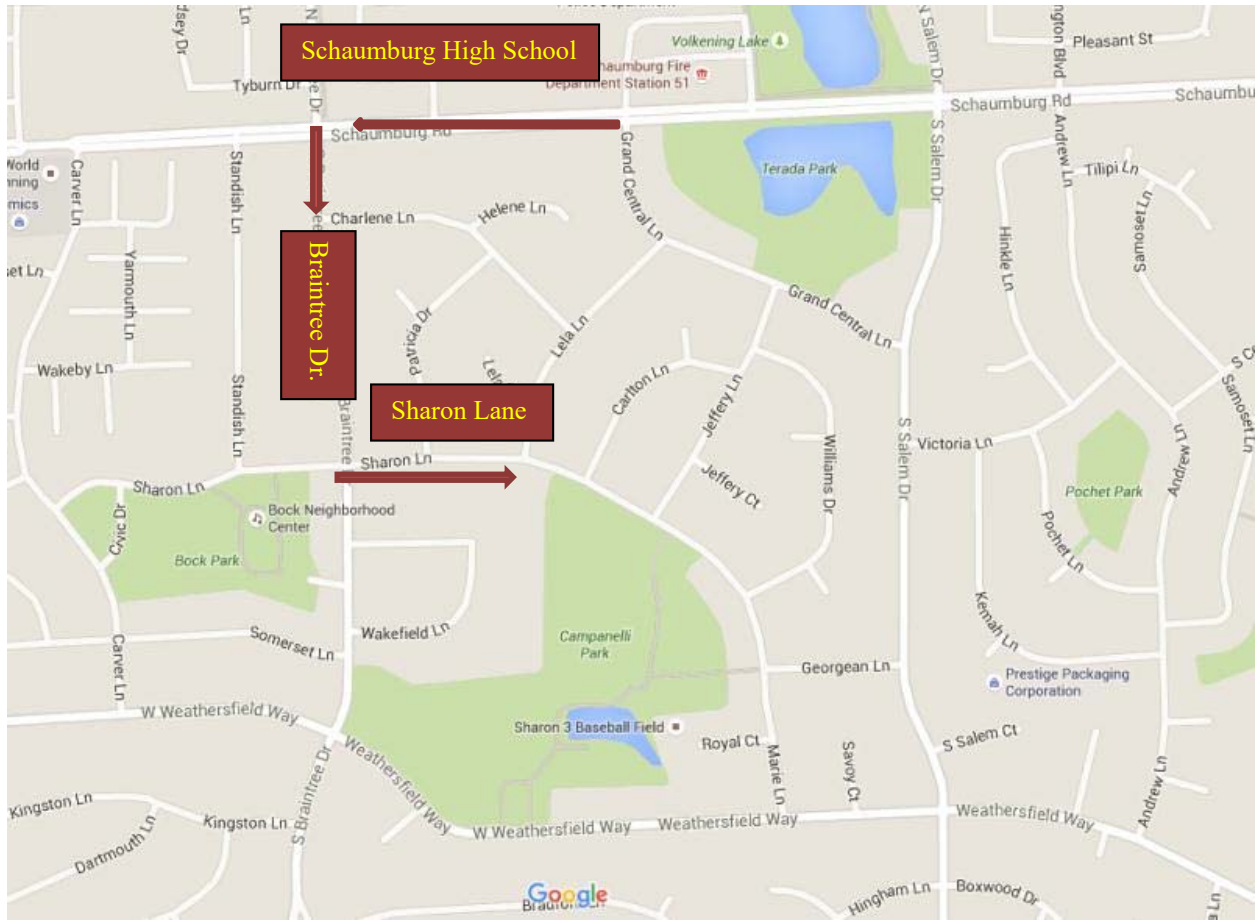
### AED Location

There is no AED located at Campanelli Park.

### Roles of the First Responder

49. Immediate care of injured or ill student-athlete.
50. Activation of emergency medical services (EMS)
  - Call 9-1-1
51. Emergency equipment retrieval
52. Direct EMS to scene
  - a. Open appropriate doors/gates
  - b. Designate individual to “flag down” EMS and direct to scene
  - c. Scene control: Limit scene to first aid providers and move bystanders away from area

## Map



## Safety Locations

In the event of severe weather (lightning/thunderstorms/tornado) athletes will be removed from the practice field and relocated to the nearest shelter. It is the responsibility of coaches to ensure that all athletes have available rides home or back to the school. Coaches will be responsible for ensuring that all players are accounted for.

## Emergency Action Plan Hoover Park

### Emergency Personnel

A coach will be the only emergency personnel when practices take place off-site. All coaches are required to be CPR/AED certified.

### Emergency Communication

Cell phone use should be used when practices are taking place off-site. Below are contact numbers for the SHS Athletic Training Staff.

Athletic Training Room	(847)755-4790
------------------------	---------------

### Emergency Equipment

A First Aid kit and supplies are available and can be brought by a coach or team manager.

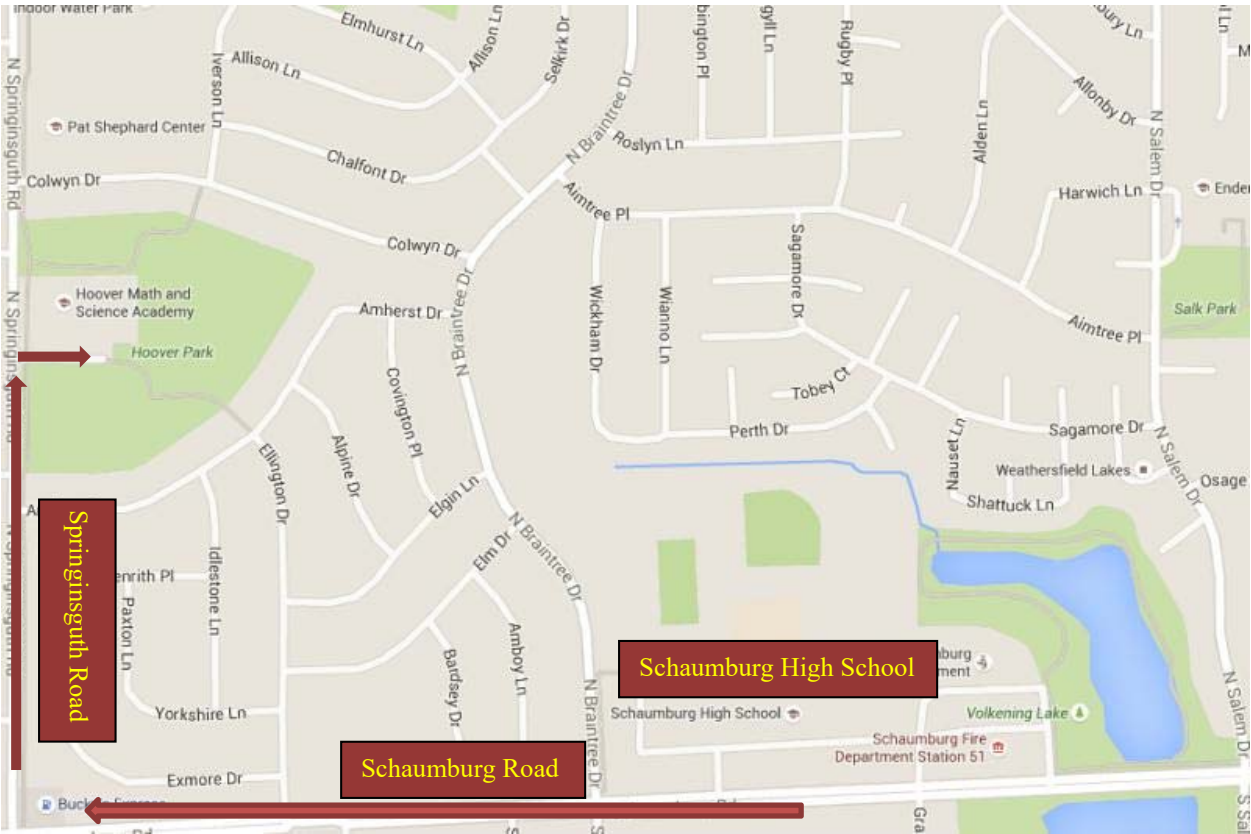
### AED Location

There is no AED located at Hoover Park.

### Roles of the First Responder

53. Immediate care of injured or ill student-athlete.
54. Activation of emergency medical services (EMS)
  - Call 9-1-1
55. Emergency equipment retrieval
56. Direct EMS to scene
  - a. Open appropriate doors/gates
  - b. Designate individual to “flag down” EMS and direct to scene
  - c. Scene control: Limit scene to first aid providers and move bystanders away from area

Map



Safety Locations

In the event of severe weather (lightning/thunderstorms/tornado) athletes will be removed from the practice field and relocated to the nearest shelter. It is the responsibility of coaches to ensure that all athletes have available rides home or back to the school. Coaches will be responsible for ensuring that all players are accounted for.

# Approval of the Emergency Action Plan

Approved by: \_\_\_\_\_  
Chief Jim Walters  
Schaumburg Emergency Medical Services  
Date

Approved by: \_\_\_\_\_  
Mr. Marty Manning  
Schaumburg High School Athletic Director  
Date

Approved by: \_\_\_\_\_  
Mr. Michael DeVries  
Schaumburg High School Head Athletic Trainer  
Date